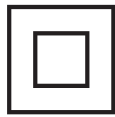


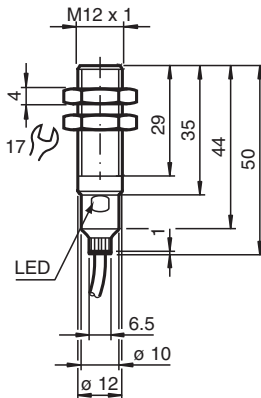
# Magnetic field sensor

## MB60-12GM50-E2

- Sensing range 60 mm based on DM60-31-15 magnet



### Dimensions



### Technical Data

#### General specifications

Switching function		Normally open (NO)
Output type		PNP
Rated operating distance	$s_n$	60 mm
Installation		flush in non-magnetic metal
Output polarity		DC
Assured operating distance	$s_a$	10 ... 48.6 mm

#### Nominal ratings

Operating voltage	$U_B$	10 ... 30 V
-------------------	-------	-------------

Release date: 2020-03-23 Date of issue: 2020-03-30 Filename: 218382\_eng.pdf

Refer to "General Notes Relating to Pepperl+Fuchs Product Information".

Pepperl+Fuchs Group  
www.pepperl-fuchs.com

USA: +1 330 486 0001  
fa-info@us.pepperl-fuchs.com

Germany: +49 621 776 1111  
fa-info@de.pepperl-fuchs.com

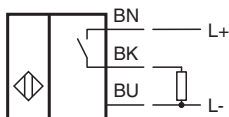
Singapore: +65 6779 9091  
fa-info@sg.pepperl-fuchs.com

PEPPERL+FUCHS

## Technical Data

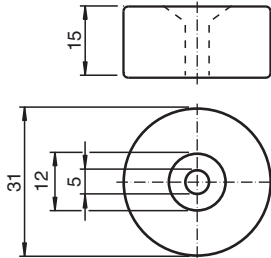
Switching frequency	f	0 ... 5000 Hz
Hysteresis	H	1 ... 10 %
Reverse polarity protection		reverse polarity protected
Short-circuit protection		pulsing
Voltage drop	$U_d$	$\leq 2.5$ V
Operating current	$I_L$	0 ... 200 mA
No-load supply current	$I_0$	$\leq 10$ mA
Switching state indicator		LED, yellow
<b>Functional safety related parameters</b>		
MTTF <sub>d</sub>		2935 a
Mission Time (T <sub>M</sub> )		20 a
Diagnostic Coverage (DC)		0 %
<b>Compliance with standards and directives</b>		
Standard conformity		
Standards		EN 60947-5-2:2007 IEC 60947-5-2:2007
<b>Approvals and certificates</b>		
Protection class		II
UL approval		cULus Listed, General Purpose
CSA approval		cCSAus Listed, General Purpose
CCC approval		CCC approval / marking not required for products rated $\leq 36$ V
<b>Ambient conditions</b>		
Ambient temperature		-25 ... 75 °C (-13 ... 167 °F)
<b>Mechanical specifications</b>		
Connection type		cable PUR , 2 m
Core cross-section		0.34 mm <sup>2</sup>
Housing material		stainless steel 1.4404 / AISI 316L
Sensing face		PBT
Degree of protection		IP67

## Connection



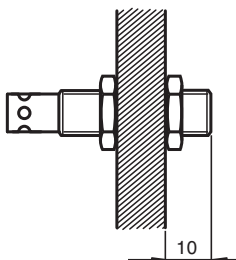
**Additional Information**

**Magnet DM 60-31-15**





**Mounting**

When installed in magnetic materials, a free space must be left.





Release date: 2020-03-23 Date of issue: 2020-03-30 Filename: 218382\_eng.pdf

**Accessories**

	<b>BF 12</b>	Mounting flange, 12 mm
	<b>EXG-12</b>	Quick mounting bracket with dead stop

Refer to "General Notes Relating to Pepperl+Fuchs Product Information".

**Accessories**

	<b>DM 25-32-07</b>	Permanent magnet for magnetic field sensors
	<b>DM 60-31-15</b>	Permanent magnet for magnetic field sensors